

# REGISTER & WIFI CONNECTION

(TS-WP Series, TS-WK Series, TS-WU-1DR)

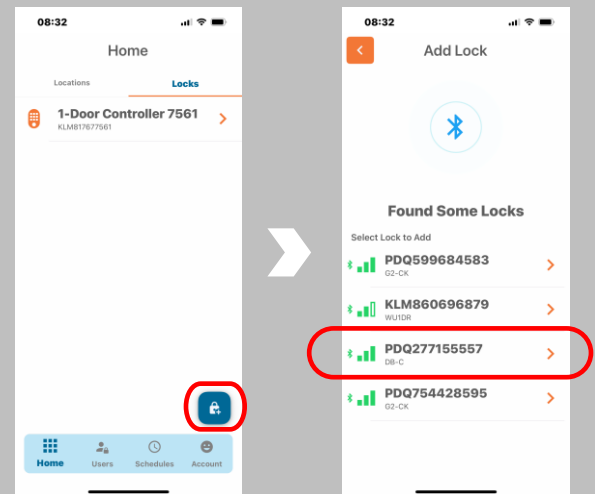


## 1. DOWNLOAD APP AND LOGIN

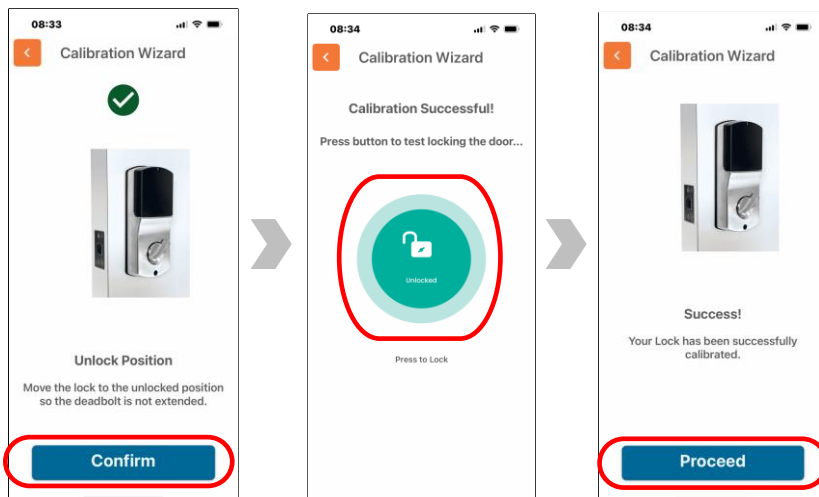
- From an Apple or Android device, open the app store and download the “TrueSecure ADMIN” app
- Open the TrueSecure ADMIN app
  - If required, press “Login” to enter your account info
  - Press “Continue” at redirect message
- If new user, select “Sign-up” under New User if installing your first device

## 2. ADD AND NAME DEVICE

- Select “Add Lock” from the Home screen or select the Add Lock icon
- Select the device to add from the Add Lock Screen
- Name the device
- Assign “Lock’s Location” (establishes time zone)
- Press “Save Lock”



## DEADBOLT MODELS ONLY (TS-WPDB)



## CALIBRATE DEADBOLT

(Note: Calibration sets the direction of the deadbolt to lock and unlock the door)

Follow “Calibration Wizard” instructions

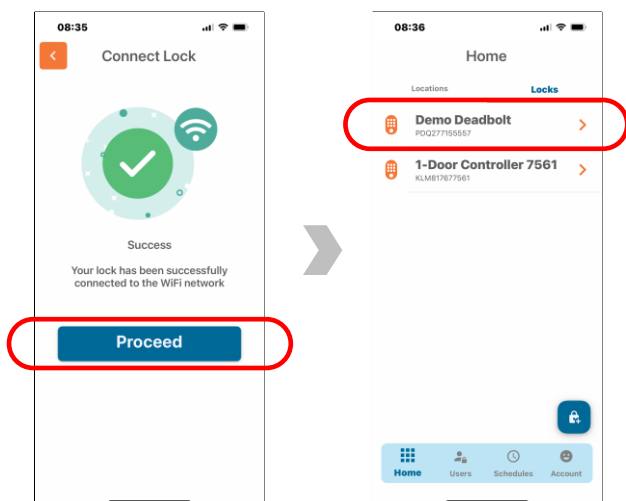
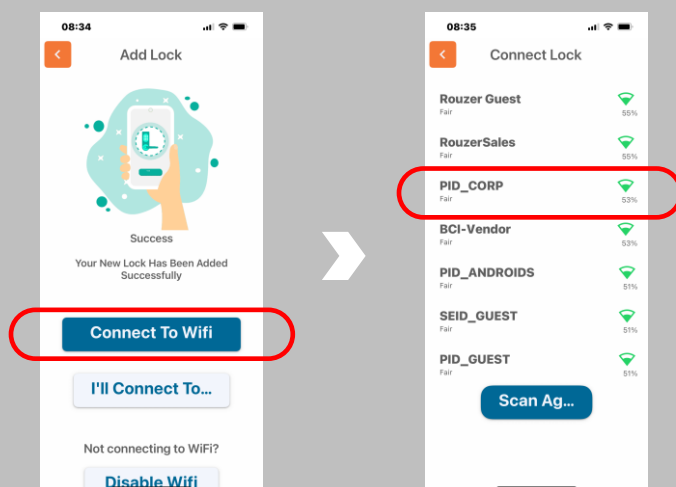
- Close door and ensure operation of latch is smooth, press “Continue”
- Move latch to UNLOCKED position, press “Confirm”
- Confirm “Calibration Successful” screen appears
- Press button to test lock
- Press “Proceed”

# REGISTER & WIFI CONNECTION (TS-WP Series, TS-WK Series, TS-WU-1DR)



## 3. CONNECT TO WIFI

- Press “Connect to Wifi” on Add Lock screen
- Select the desired Wi-Fi network from the “Wifi Networks Found” list on the Connect Lock page
- (If network is not shown in list, press “Scan Again” button)
- Enter Wi-Fi network password and click “Connect



## 4. CONNECTION SUCCESS

- Confirm connection is complete with Connect Lock Success screen
- Press the “Proceed” button to complete the connection setup process
- Lock will now appear on Home screen
- If connection unsuccessful, repeat from Step 2